

Single zone inverter mini split

MODEL: TW18HTA3D

TOSOT

Job Name:

Engineer Name:

System No:

- File  Resubmit
- Approval  Other

Location:

Contractor:

Date:

**General Features**

- Smart 1 Hertz Inverter Technology
- Low Ambient Cooling to 5 °F
- 7 Fan Speeds - from Mute to Turbo
- Technology 4-Way Airflow Operation
- Extended Airflow (9k & 12k sizes)
- Waterfall Heating Airflow
- Photocatalytic Filter
- Dry Anti-mildew Design
- LED Display
- Gold Fin Condenser
- Low Voltage Start-up
- Intelligent Pre-heating / Defrost
- High And Low Pressure Protection Features
- Load Protection Features
- Over-Current Protection
- Anti Freeze Protection



**Unit Performance:**

|                                 |                     |
|---------------------------------|---------------------|
| <i>Cooling:</i>                 |                     |
| Capacity (Min-Rated-Max, Btu/h) | 4,600-18,000-22,180 |
| SEER                            | 21                  |
| EER                             | 12                  |
| <i>Heating:</i>                 |                     |
| Capacity (Min-Rated-Max, Btu/h) | 3,412-19,000-23,202 |
| HSPF                            | 10                  |
| COP (W/W)                       | 3.5                 |

\*\*\*\*

**Unit Specification**

|                            |       |
|----------------------------|-------|
| Refrigerant Type           | R410A |
| Refrigerant Charge (oz)    | 56.4  |
| ODU Sound Pressure (dB(A)) | 56    |
| IDU Sound Pressure (dB(A)) | 33/51 |
| ODU Net Weight (lbs)       | 108   |
| IDU Net Weight (lbs)       | 31    |
| Dehumidifying (Pint/h)     | 3.8   |

*Fan*

|                             |                       |
|-----------------------------|-----------------------|
| ODU / IDU Type              | Axial-flow/Cross-flow |
| Quantity (ODU + IDU)        | 1+1                   |
| Motor/Drive                 | Direct Drive          |
| ODU Max Air Flow Rate (CFM) | 3200                  |
| IDU Air Flow Rate (CFM)     | 282/559               |

**Compressor**

|                                       |              |
|---------------------------------------|--------------|
| Cooling Operation Ambient temp. Range | - 0.4~115 °F |
| Heating Operation Ambient temp. Range | -5~75.2 °F   |
| Compressor Type                       | Rotary       |
| Fan Motor Output (W)                  | 60           |
| Crankcase Heater                      | Yes          |

**Electrical Specification**

|                                  |                 |
|----------------------------------|-----------------|
| Power Supply                     | 208-230V / 60Hz |
| Communications Wire Size         | AWG 14          |
| MOP (A)                          | 20              |
| MCA (A)                          | 15              |
| Cooling Rated Amps (A)           | 13.1            |
| Heating Rated Amps (A)           | 13.3            |
| Compressor RLA (A)               | 7.2             |
| Indoor Fan Motor RLA (A)         | 0.1             |
| Outdoor Fan Motor RLA (A)        | 0.5             |
| Nominal Cooling Power Input (kW) | 1.5             |
| Nominal Heating Power Input (kW) | 1.58            |

*Piping*

|   |      |
|---|------|
| Liquid Line (in, OD)                      | 1/4  |
| Gas Line (in, OD)                         | 5/8  |
| Additional Refrigerant (oz./ft.)          | 0.5  |
| Max Pipe Length (ft.)                     | 82   |
| Piping Length (no add'l refrigerant, ft.) | 24.6 |
| Max Elevation (ft.)                       | 32.8 |

AHRI certification Ref #



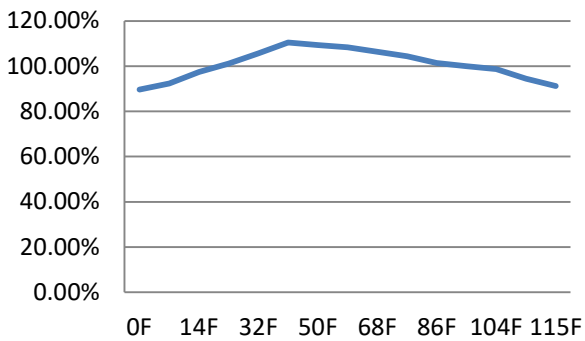
Single zone inverter mini split

MODEL: TW18HTA3D

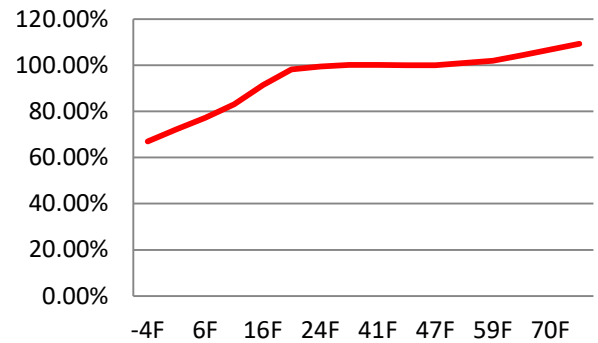
**TOSOT**

Capacity Variation Ratio According to Temperature

### Cooling Performance



### Heating Performance

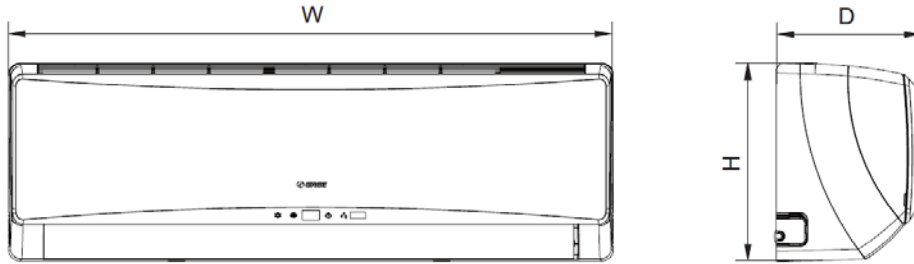


Single zone inverter mini split

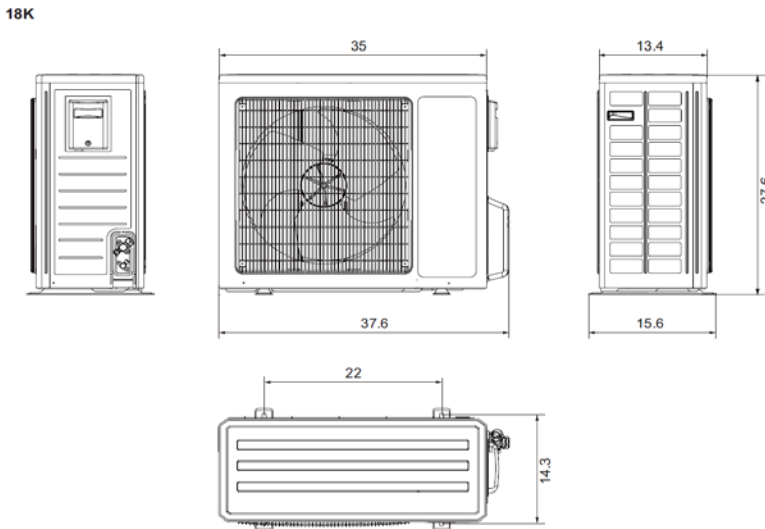
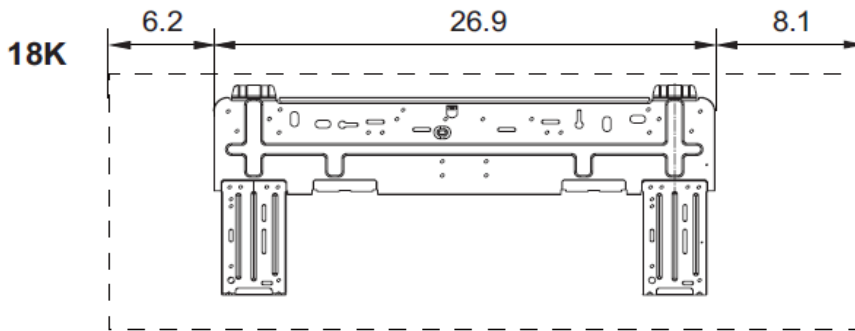
MODEL: TW18HTA3D

**TOSOT**

**Outline Dimension Diagram**



| W    | H    | D   |
|------|------|-----|
| 41.2 | 13.6 | 9.2 |



Unit: inch

**GLOSSARY**

SEER - Seasonal Energy Efficiency Ratio

EER - Energy Efficiency Ratio

HSPF - Heating Seasonal Performance Factor

MOP - Maximum Overcurrent Protection

MCA - Minimum Circuit Ampacity

**TOSOT**

5965 Chemin de la Côte de Liesse  
Saint laurent, QC, Canada, H4T 1C3

Contact: +1 438 792 1956

[info@tosotusa.com](mailto:info@tosotusa.com)

[www.tosotusa.com](http://www.tosotusa.com)